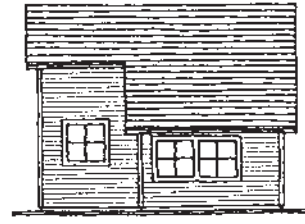
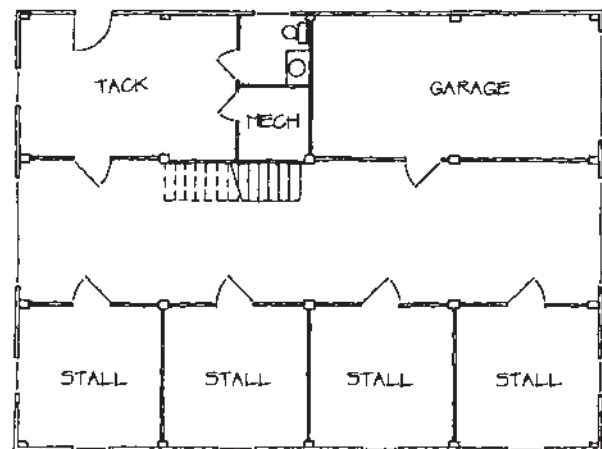
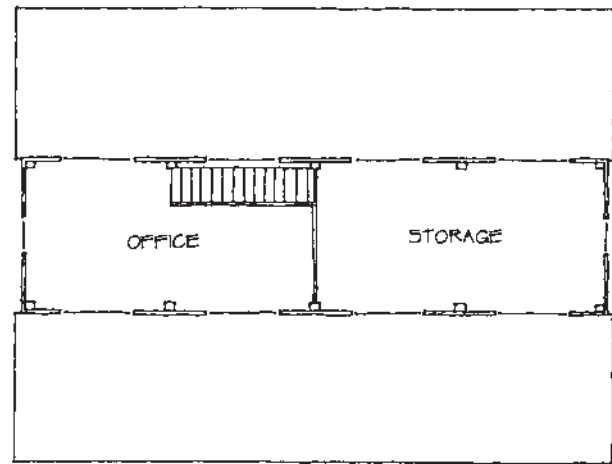


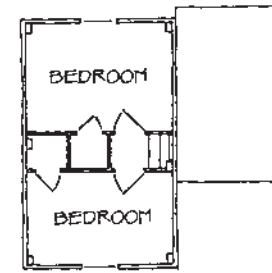
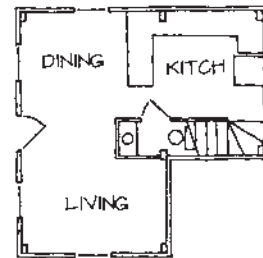
TWO STORY W/ WINGS

THIS STRUCTURE ALLOWS FOR A FULL HEIGHT SECOND FLOOR WITH ROOM FOR WINDOWS ON ALL SIDES. FLEXIBILITY EXISTS TO MAKE THIS FRAME LONGER OR SHORTER OR TO ADJUST THE WIDTH BY CHANGING BAY WIDTHS.

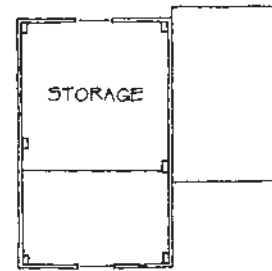
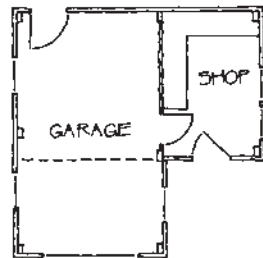


CAPE W/ SHED

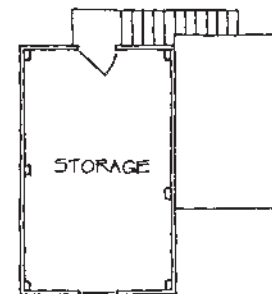
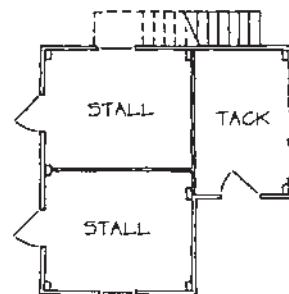
TIMBER FRAMES CAN BE MAGICALLY TRANSFORMED SIMPLY BY HOW YOU PLAN TO USE THEM. A FRAME THAT WOULD BE WELL SUITED FOR A PAIR OF HORSE STALLS IS EQUALLY AS USEFUL AS A TRACTOR SHELTER OR AS A GUEST COTTAGE OR AS A GARAGE.



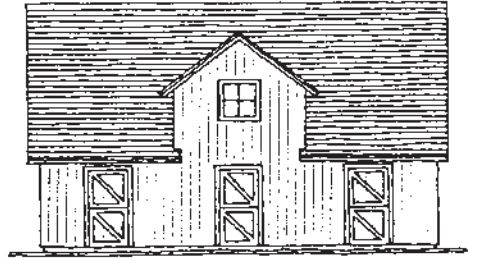
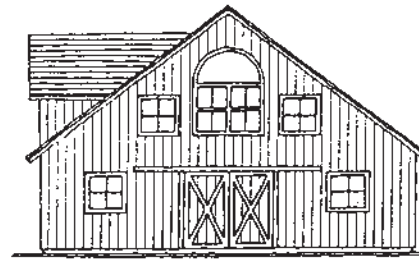
COTTAGE



GARAGE/SHOP

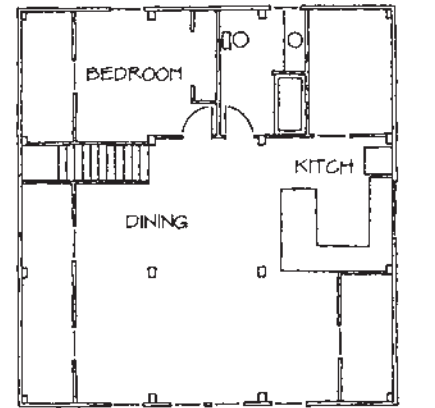
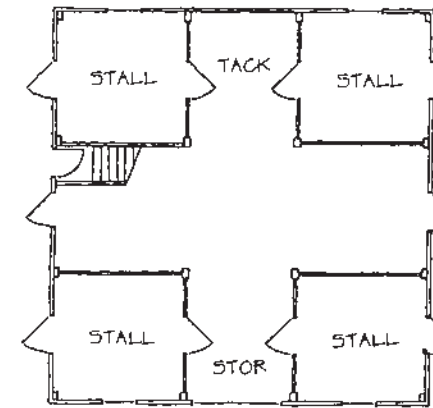


STABLE



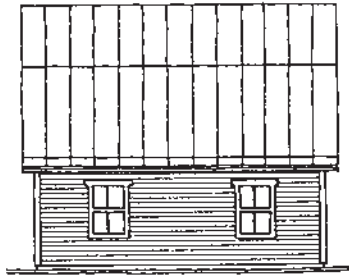
WIDE CAPE

THIS FOUR STALL HORSE BARN IS A VARIATION OF THE CAPE HOME FRAME SEEN IN OUR RESIDENTIAL BROCHURE. WITH LIVING QUARTERS UPSTAIRS AND GENEROUS WORK SPACES BELOW, THIS DESIGN SHOWS A FLEXIBILITY THAT WOULD BE HARD TO DUPLICATE USING OTHER METHODS OF CONSTRUCTION.



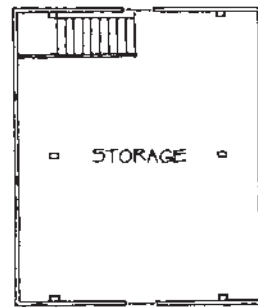
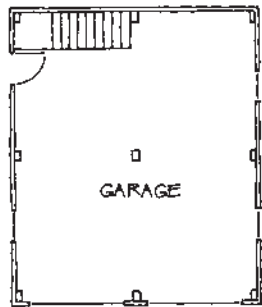
VERMONT FRAMES

TRADITIONAL, AFFORDABLE
POST & BEAM HOMES



GAMBREL

THIS GAMBREL STYLE FRAME IS A TRADITIONAL BARN PROFILE. THE ROOF LINE PROVIDES MAXIMUM USABLE FLOOR SPACE UPSTAIRS, SHOWN AS A GARAGE. THE OPEN PLAN HAS MANY USES.



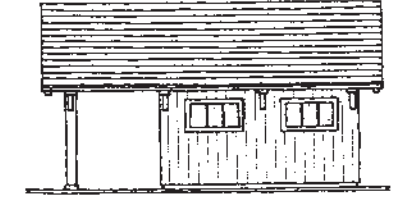
VERMONT FRAMES

Box 100, Hinesburg, Vermont 05461 · 800 · 545 · 6290

TIMBER FRAMING IS COMMONLY DESCRIBED AS "BARN STYLE" CONSTRUCTION. THOUGH MOST OF THE PROJECTS WE BUILD ARE FOR FINISHED RESIDENCES, WE SEE MORE AND MORE REQUESTS FOR BARN, STORAGE BUILDINGS, GAZEBOS, AND CABINS. TO LET YOU KNOW THE WIDE RANGE OF POSSIBILITIES, WE HAVE GATHERED SOME IDEAS FOR YOU.

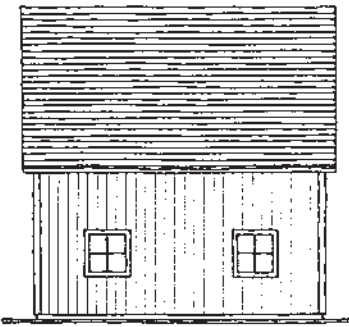
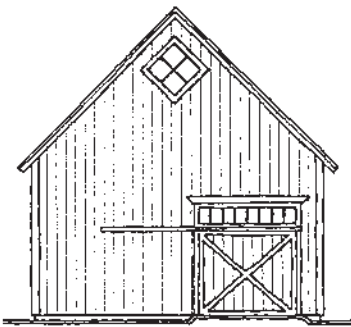
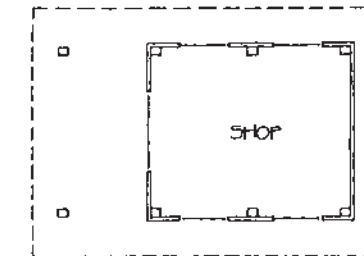
BY UTILIZING DORMERS, ELLS, CUPOLAS, OR CLERESTORIES YOU CAN TRANSFORM A BASIC BOX INTO A STRUCTURE WITH CHARACTER AND UTILITY. ARCHITECTURAL DETAILS FROM YOUR PRIMARY RESIDENCE CAN BE REPLICATED IN YOUR BARN OR GUEST HOUSE TO LEND CONTINUITY TO YOUR PROJECT. YOU CAN ALSO USE DETAILS TO MAKE A COMPLETELY INDEPENDENT STATEMENT.

BECAUSE TIMBER FRAMING IS SO FLEXIBLE AND OPEN IT CAN BE ADAPTED FROM A BASIC LAYOUT TO A VARIETY OF USES. WE WOULD LIKE TO SHOW YOU THE POSSIBILITIES SMALL STRUCTURE FRAMING HAS TO OFFER YOUR IMAGINATION WE CAN HELP YOU RUN WITH YOUR IDEAS AND CREATE A PROJECT THAT MATCHES YOUR NEEDS.



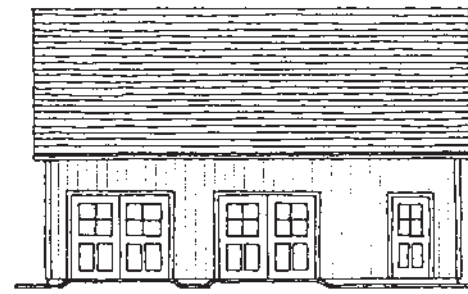
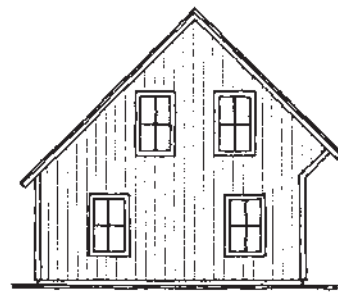
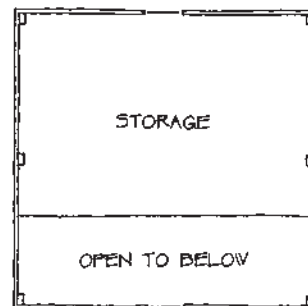
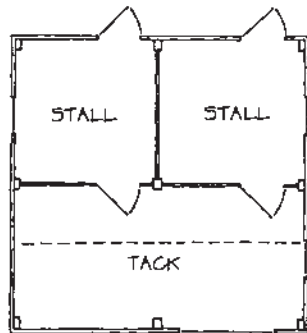
EXPOSED FRAME

A PARTIALLY ENCLOSED STUDIO ALLOWS THE BEAUTY OF THE FRAMING TO BE SEEN BY ALL PASSERSBY. WITH A COVERED AREA OUTSIDE THE STRUCTURE, IT WORKS EQUALLY WELL AS A GARDEN SHED, POOL HOUSE, OR FARM STAND.



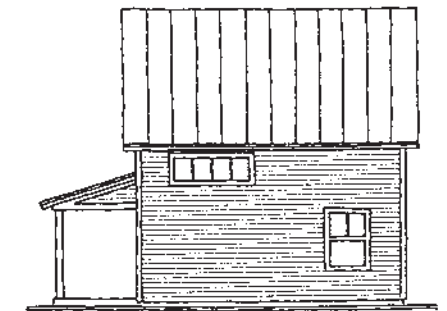
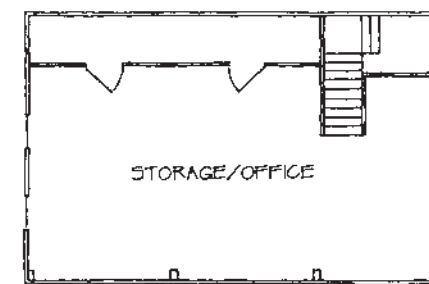
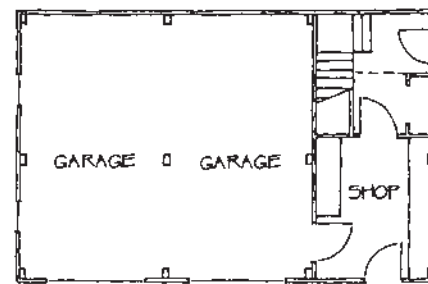
CAPE

CAPE'S ARE ONE OF AMERICA'S OLDEST HOUSING STYLES. WITH CLASSIC LINES, THIS CAPE WITH A KNEEWALL IS DESIGNED AS A TWO STALL HORSE STABLE WITH PLENTY OF TACK STORAGE ROOM.



SALTBOX

IN NEW ENGLAND, THE SALTBOX IS ONE OF THE MOST COMMON TRADITIONAL BUILDING FORMS. WITH A GENEROUS EAVE OVERHANG TO PROVIDE WEATHER PROTECTION, THIS GARAGE AND SHOP DESIGN UTILIZES ALL OF THE ADVANTAGES THIS STYLE CAN PROVIDE.



DUTCH SALTBOX

THE DUTCH SALTBOX IS A VARIATION ON A TRIED AND TRUE HOUSING FORM. LAID OUT AS A CAMP OR COTTAGE, THE INTERESTING ROOF LINES SUPPORT ONE OF THE MOST COST EFFECTIVE HOUSING STYLES AVAILABLE.

