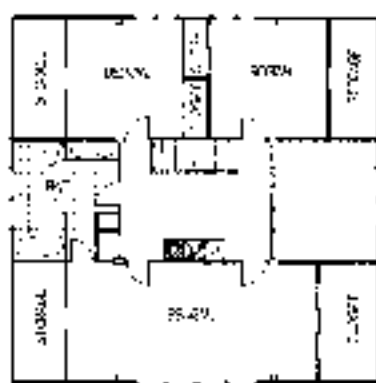
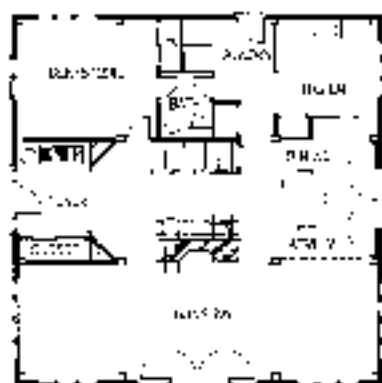


### *Cape Howe*

The 26' x 36' Cape Howe, with its front and rear dormers, is the acme of our traditional frames. Front or side facing southern exposure, numerous upstairs and downstairs floor plans, segmented both upstairs, chimney and stairwell flexibility and well thought out make this home perfect for your building site.



# VERMONT FRAMES

TRADITIONAL, AFFORDABLE  
POST & BEAM HOMES



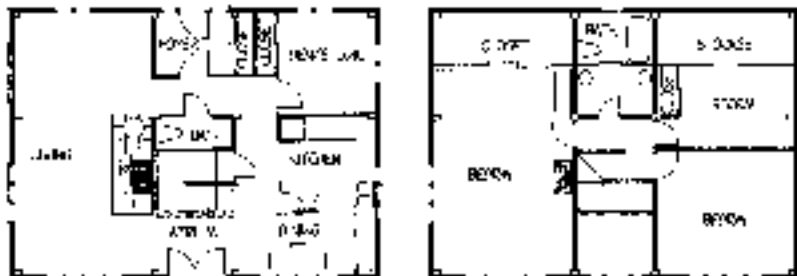
### Queenspost Saltbox

The 266/32' Queenspost Saltbox is the most popular of our frames and is designed to capture the most from a sunny location. The east facing living and dining areas provide a warm, naturally lit atmosphere for your daytime hours. A half bath, laundry room and north facing vestibule/mudroom make this a truly convenient home. Two or three bedrooms and full bath upstairs complete this traditional Saltbox home.



### St. George Saltbox

The 20'x36' St. George Saltbox is an elegant home with formal atrium and west facing living and dining areas for capturing afternoon and evening sun. The downstairs rooms are large and open and the kitchen has ample room for a convenient central work area. Upstairs includes a dormer with large bath, a dressing area and flexibility for two, three or four bedrooms.





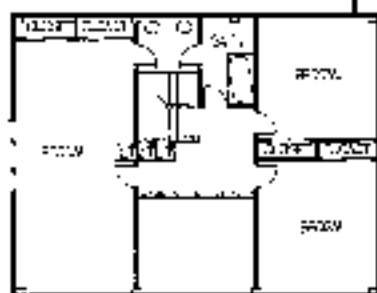
### Cape Pierce

The 18'x32' Cape Pierce is the perfect starter or second home and offers some of the best features of Post & Beam living. Large, open sunny areas downstairs provide for living, dining and kitchen areas. Upstairs, the 4' access wall offers ample room for two or three bed rooms and full bath. This is a truly flexible home to fit your present needs and future plans.



### Craftsbury Cape

The Craftsbury Cape is a 28'x36' frame with a 4' access wall that provides expanded upstairs space for three or four bedrooms and large bath. Downstairs, the centrally located double corner chimney and fireplace connect to both living room and den. The kitchen features a breakfast bar connecting to our 16'x16' "Junior" Cape Family Room. In addition, there are more floor plans available giving you many creative possibilities.





### *Shaker Mt. Saltbox*

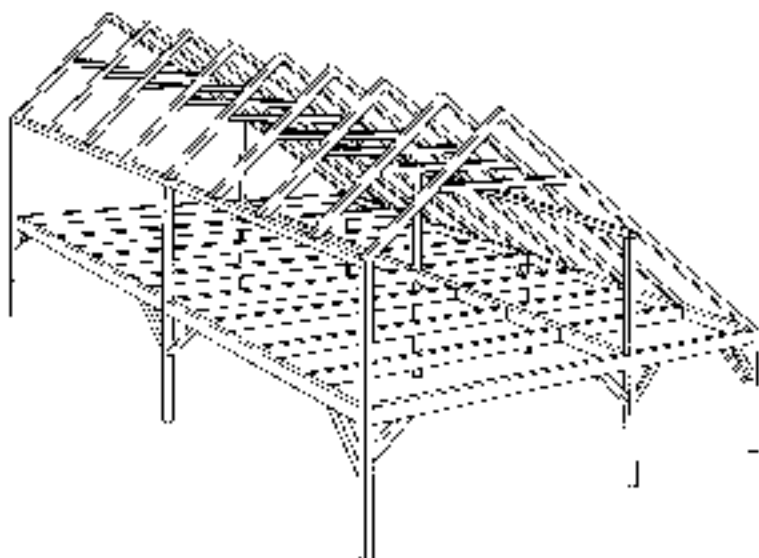
This 26'x32' Saltbox is designed with expansion in mind. The original home has the kitchen and informal entrance to the rear with a central chimney dividing the living and dining areas. The plan gives you two or three bedrooms, full bath and dressing area as needed. The addition of our 16'x16' "Junior" Saltbox allows you to have a family room, studio or any current or future space you may need.



### *Chelsea Cape*

The 28'x32' Chelsea Cape is our most traditional Cape design. A central hallway and two fireplaces divide the downstairs living areas. The large kitchen accommodates a central work island and bar sink and is close to a convenient utility room. You may have two bedrooms upstairs or create a studio/office as a quiet work space.





## *About Vermont Frames*

As we approach thirty years in the business of crafting and erecting Post & Beam frames, we are continually proud of our success and level of customer satisfaction with our product. There is a true sense of excitement among our craftsmen when a load of new Pine timbers arrives at Vermont Frames and we begin the process of creating. We finalize your plans, set the delivery date, sharpen our saws, chisels, planes and other tools and do what we do best... custom cut and craft your Vermont Frame. When we arrive at your building site and erect your frame you can be assured of timely, accurate work because of the care we have taken during delivery. In short, you can be proud because we are proud.

## *Your Plans or Ours*

You can start with our designs, or bring us your ideas & drawings and have us create a frame for you. Vermont Frames can work with your builder to meet your requirements, size, style and location. We know that you will be pleased with one of our bold, handcrafted frames, which will give your home functionality, strength and aesthetic beauty.

Our design team is waiting to hear your ideas

Additional information: [www.vermontframes.com](http://www.vermontframes.com)

Additional designs and ideas on the web at  
[www.timberworksdesign.com](http://www.timberworksdesign.com)



# VERMONT FRAMES

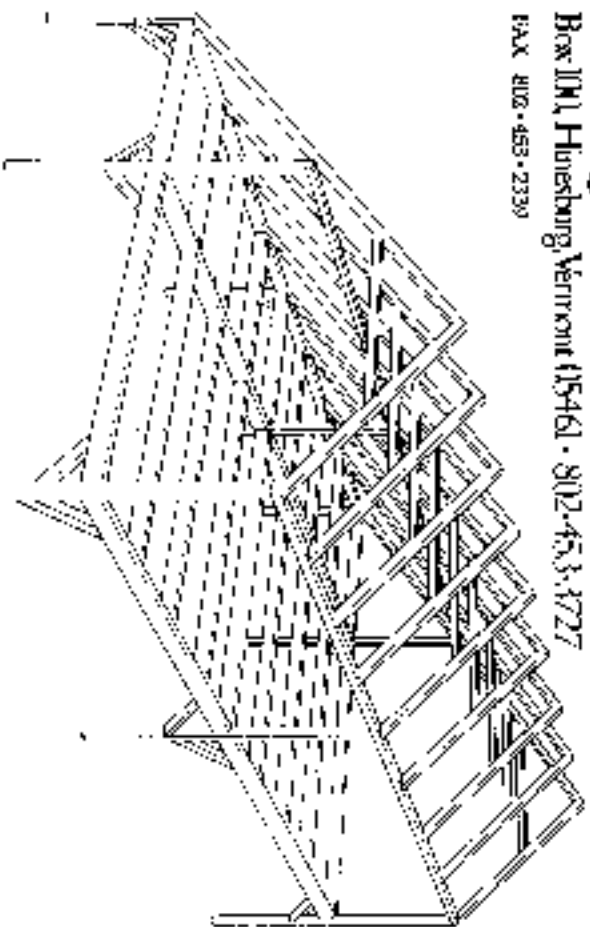
Box 100, Hinesburg, Vermont 05461 • 800-545-6290

© 2000 Vermont Frames

# VERMONT FRAMMERS

Box 1111, Hinesburg, Vermont 05461 • 802-453-3727

FAX 802-453-2339



*Here is the information you requested.*