



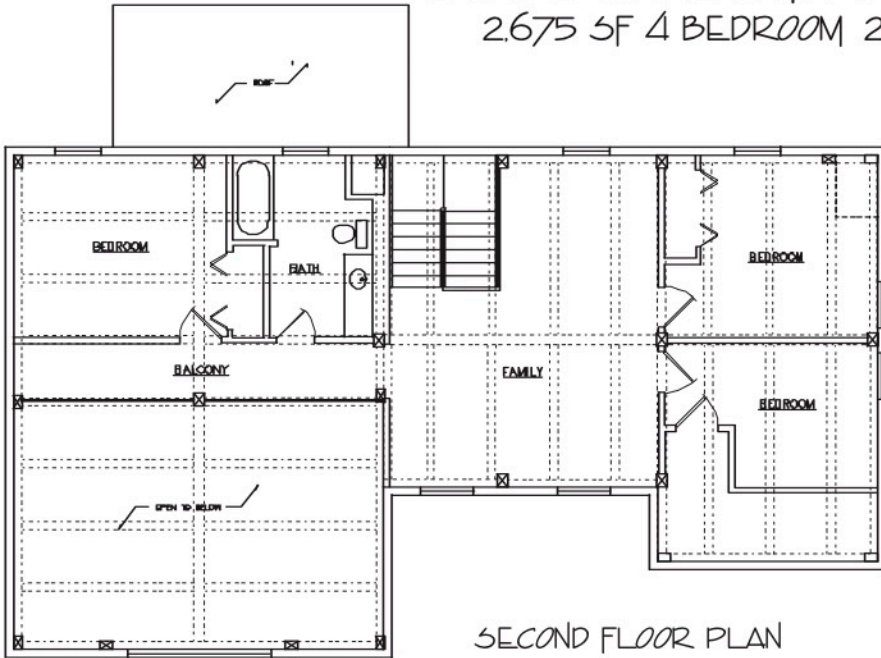
RIGHT SIDE VIEW

The Colchester

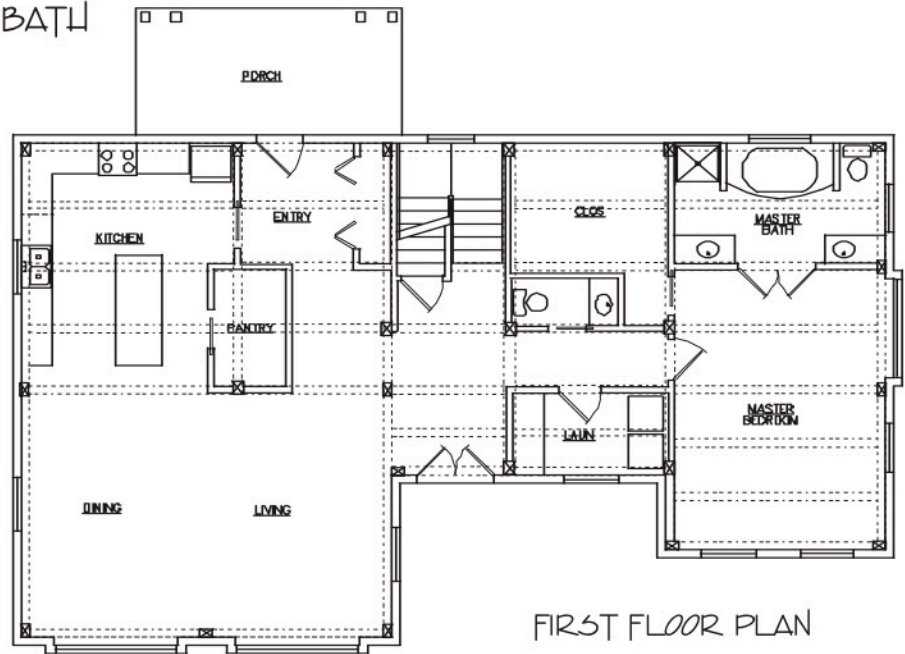


FRONT VIEW

24'X32' CAPE WITH 32'X22' WING
2,675 SF 4 BEDROOM 2 1/2 BATH



SECOND FLOOR PLAN



FIRST FLOOR PLAN

The Colchester

Frame Erected	\$65,870	* Price does not include delivery
Frame Unerected	\$52,976	* Panels Quoted: R-38 Roof R-24 Walls
SIPs	\$39,822	* Price subject to change
		* Price does not include panel installation

VERMONT FRAMES
Box 100, Hinesburg, Vermont 05461
ph: 802.453.3727 fax: 802.453.2339

HOUSE DESIGN BY:



21 SCOTSDALE ROAD, SOUTH BURLINGTON, VT 05403 (802) 863-8715